



Upgrading Climate Notebook

To upgrade the 3.1 version of Climate Notebook, you must replace the current Climate Notebook executable file (the `cnb.exe` file in the Climate Notebook folder) with a new `cnb.exe` file from our FTP site. The instructions below will guide you through the steps to complete the update.

Internet Explorer Users

If you are using Internet Explorer as your web browser, follow the steps below:

1. Launch Internet Explorer and type the following URL:

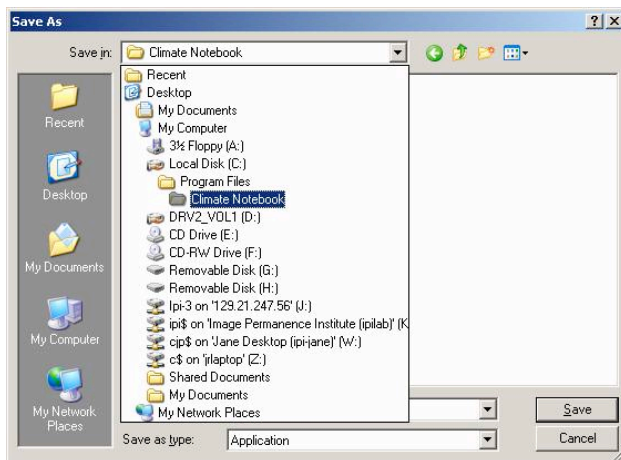
- <http://ipilab.rit.edu/download/cnb.exe>

The **File Download - Security Warning** dialog displays:



2. Click **Save**. The **Save As** dialog displays.

3. From the **Save in** drop down, navigate to `C:\Program Files\Climate Notebook`:



1. Click **Save**. The **Confirm File Replace** dialog displays:



2. Click **Yes** to confirm the replacement of the existing file. The cnb.exe file is saved in the Climate Notebook folder. The old cnb.exe file is replaced with the new cnb.exe file.

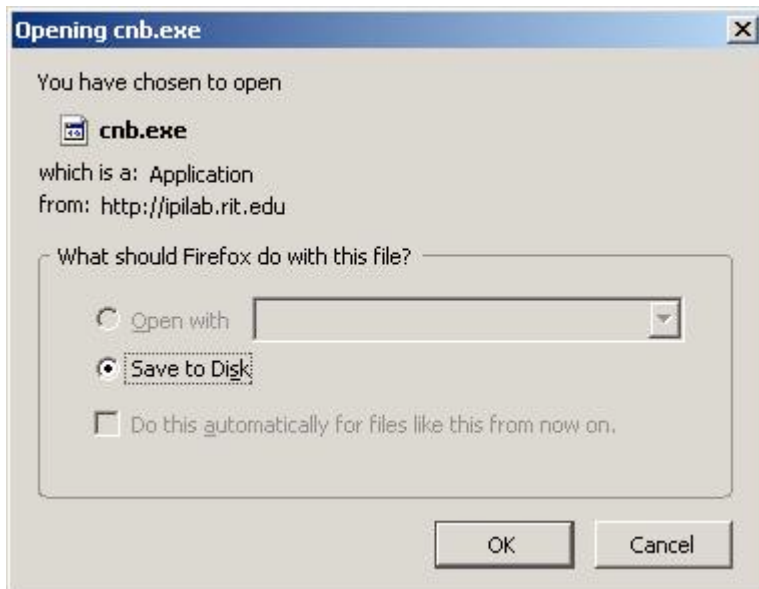
Climate Notebook will include the PEM2 as a data logger choice when importing data. PEM2 data can be imported using the same steps as when importing data from any other logger.

Firefox Users

If you are using Firefox as your web browser, follow the steps below:

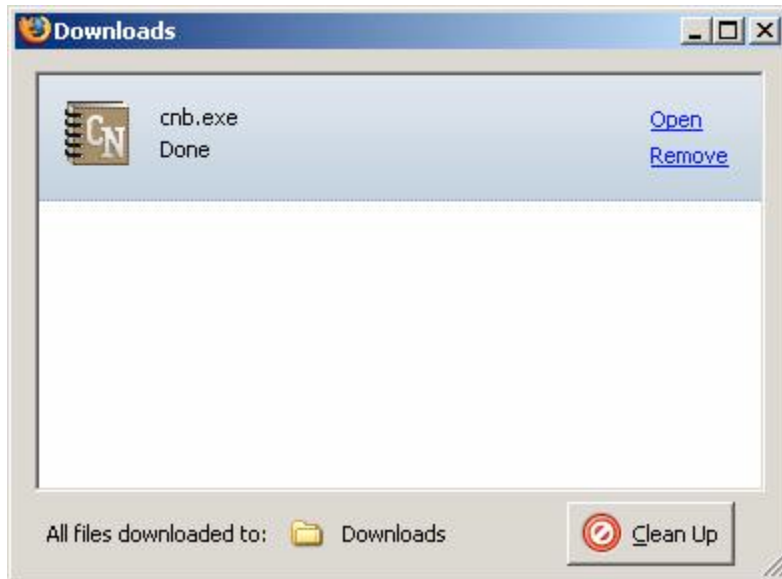
1. Launch Firefox and type the following URL:
 - <http://ipilab.rit.edu/download/cnb.exe>

The **Opening cnb.exe** dialog displays:



2. Select **Save to Disk**. The file is downloaded in the default location specified in Firefox.

Note: If you have trouble finding the file, refer to the **Downloads** dialog:



The default location for Firefox is indicated in the **All files downloaded to** field.

3. Navigate to the folder where the cnb.exe file was downloaded and copy the cnb.exe file.
4. Navigate to C:\Program Files\Climate Notebook.
5. Paste the cnb.exe file in the Climate Notebook folder. The **Confirm File Replace** dialog displays:



6. Click **Yes** to confirm the replacement of the existing file. The cnb.exe file is saved in the Climate Notebook folder. The old cnb.exe file is replaced with the new cnb.exe file.

Climate Notebook will include the PEM₂ as a data logger choice when importing data. PEM₂ data can be imported using the same steps as when importing data from any other logger.